



## Installation manual dual colour skylights daf

make sure the area is dry and dust free  
**all actions must be performed by a professional**

**video of the manual**

<https://youtube.com/shorts/HfbEb2cw5Y4>

Tools:

- 3mm drill
- sharp knife
- multi-tool
- body sealant or sealant that stays flexible (black)
- torx t20

Disassembly of the lamp can be done from the inside by removing 2 screws in the top cabinet behind the black flap.

On the outside you can remove the silver trim and then the lamp can be removed

First we start by sawing off the plastic glass from the back as tightly as possible along the back including all clips with the multi-tool

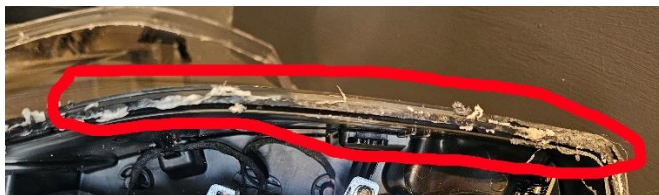
The black trim can be clicked out

Do not touch the mirror with your fingers.

The mirror can be removed with 3 screws with torx t20.



When that is done, we carefully remove the loose melted plastic with a sharp knife.



After which the old LED print can be removed,

Shake and blow all saw residues out of the lamp.

Drill a 3mm hole from the inside above the plug to the outside.



Then the plus cable can go through it and the new LED print can be placed, the mirror can now be fixed again.

make sure all the sawdust is out of the lamp and the glass is clean

A rim of sealant can now be placed on the edge and the front can be put back

make sure the sealant seals everything well and if necessary, when everything is together, apply a final layer to the outside

after mounting the lamp, the red wire can be connected for switching to orange, this requires 24v

**ROKA**  
solutions